



Citrix Presentation Server

Citrix Presentation Server™, the foundation of the Citrix Access Suite™ and the most widely deployed presentation server, is designed to centrally manage virtually any application and deliver access to any authorized user anytime, anywhere, using any device, over any network. Presentation Server supports virtually any custom or commercially packaged Windows®, UNIX®, JAVA™ or Web application.

Citrix Presentation Server provides an exceptional foundation on which to build highly scalable, flexible, secure, manageable access solutions that reduce computing costs and increase the utility of any information system.

Presentation Server is available in three editions to accommodate a wide spectrum of customer requirements for functionality and scale.

- Citrix Presentation Server, Enterprise Edition provides large organizations and multi-national corporations with greater scalability, application compatibility, server performance, rapid application deployment and comprehensive management and monitoring capabilities. Enterprise Edition is available for Windows Server™ 2003 and Windows 2000 Server, and now includes Citrix Presentation Server for UNIX.

Note: Citrix Presentation Server for UNIX is available only in the Enterprise Edition and provides support for Sun Solaris™, IBM AIX®, and HP-UX® server platforms. Citrix Presentation Server 4.0 for Windows and UNIX share Enterprise Edition concurrent user connection licenses.

- Citrix Presentation Server, Advanced Edition provides small to medium-sized organizations deploying multiple servers with additional scalability, manageability, and application availability to meet growth requirements for deploying applications. Advanced Edition is available for Windows Server 2003 and Windows 2000 Server.
- Citrix Presentation Server, Standard Edition delivers the level of control that departments, workgroups and small organizations need in a single server environment, by providing centralized management and control to give workers secure access to applications anytime, anywhere, over any connection, from virtually any device. Standard Edition is available for Windows Server 2003 and Windows 2000 Server.

DEPLOY A ROBUST ACCESS PLATFORM

Organizations require secure access to their applications and information, even across geographies and time zones to achieve business goals, but are often distracted by the challenges of managing and controlling IT resources. Citrix Presentation Server provides a robust and resilient foundation that helps organizations align business goals with IT capabilities by providing powerful management tools that enhance administrative efficiency and increase system control.

SPEED APPLICATION DEPLOYMENT WHILE REDUCING IT COSTS

Simplify and speed deployment of new applications, updates and patch deployment — regardless of the diversity of the access devices, software languages, computing architectures, and networks that are involved. Now organizations can install a greater number of applications and users on each server, helping reduce cost and increasing manageability. Additionally, deploy troublesome applications that were not developed for a server, or conflict with other applications when installed on the same server. Continue to leverage existing infrastructure while modernizing your business.

INCREASE PRODUCTIVITY

Presentation Server enables users to be more productive wherever they are. Applications and information can be securely accessed in real-time over wired and wireless networks, improving data accuracy and speeding business processes. Users can roam between devices, locations and networks and continue working without interruption. Printing is up to 4 times faster and enhanced management allows the use of advanced printer functions, and enables session printer policies for printing to the closest printer when roaming from device to device.

INCREASE ACCESS SECURITY

To assist organizations in meeting internal standards and complying with government and industry regulations, Presentation Server provides a centrally controlled, secure by design platform. This enables end to end visibility to design compliant systems, and gives IT administrators greater control over application deployment and security, all while reducing overall compliance costs.

DEPLOY A ROBUST ACCESS PLATFORM

FEATURE	DESCRIPTION	BENEFITS
NEW CPU Utilization Management <i>Enterprise Edition</i>	Normalizes the usage of server resources by each user by smoothing out the normal CPU peaks that most applications have.	Reduces IT costs and eases system management by increasing single-server scalability to support more simultaneous users on a single server while maintaining acceptable performance per server and hence, less servers or more room for growth.
NEW Virtual Memory Optimization <i>Enterprise Edition</i>	Performs DLL rebasing for applications in order to reduce the amount of memory conflicts when loading DLLs.	Improves application performance and virtual memory usage, resulting in a reduction in overall memory requirements for some applications. This in turn provides more room for additional users and applications on a single server, reducing IT costs.
NEW Multi-language localization	Same infrastructure can be used in any country, regardless of the local language.	Simplifies system administration and increases IT productivity.
NEW Easier Smart Card Support	Enhancements that automatically detect applications that are smart card enabled.	Increases IT productivity as administrators no longer need to use a separate Citrix utility (SCConfig) to configure smart card applications.
NEW Improved Smart Card PIN Handling	Improved PIN handling enables users to pass their credentials correctly through to new sessions on multiple servers, helping to eliminate failed logon attempts after successfully authenticating with an initial server.	Provides a more flexible solution as this enables users with smart cards to access servers that are not smart card enabled.
NEW Web Interface and Program Neighborhood Agent administration in Access Suite Console	Web Interface and Program Neighborhood Agent are now administered through the Access Suite Console.	Increases IT productivity by providing a common place for all administration. Manage multiple Web Interface sites from the same location and even the same configuration. Manage Windows and UNIX websites from the same console.
NEW Support for HP Protect Tools (formerly known as HP Windows Secure Edition (SE))	Offers full support for farms running on Windows domains using HP Protect Tools.	Increase flexibility as user logons and application launches using Win32 Clients or the Web Interface now fully operate with HP Protect Tools, greatly enhancing HP environments.
NEW Support for Operating System File Locking Rules	Client drive mapping for Citrix Presentation Server now supports and conforms to operating system file locking rules. When a file is opened, the remote file system driver locks it on both the server and client side, thereby preventing possible versioning conflicts brought about by simultaneous use by multiple users.	Improves information accuracy.

FEATURE	DESCRIPTION	BENEFITS
NEW Presentation Server for UNIX <i>Enterprise Edition</i>	Both Windows and UNIX platforms are included in Presentation Server 4.0. These 2 platforms share Unified Licensing.	More flexible and powerful solution for heterogeneous environments. Unified licensing means users can simultaneously access both Windows and UNIX applications consuming only one (1) concurrent user connection license.
Control, reporting, and logging	Helps meet industry and government regulations through security and control of applications and information.	Simplifies system management and makes compliance auditing easier and less costly.
On-demand licensing	Reduce administrative costs of managing product licenses and make it easy to add users as the organization grows.	Simplifies system deployment and management.
Enterprise farm scalability	Easily expand implementations and provide reliable service with proven scalability for large server farms and support for server farms that span WANs.	Proven solution for large organizations.
Unified Management Console and Report Center	Ability to meet service level agreements (SLA) by observing, monitoring, measuring, auditing, and reporting on application availability and system performance.	Helps deliver IT as a service. Improves IT productivity and visibility to system utilization.
Server platform and operating system independence	Match existing heterogeneity of the corporate data center by running on different server platforms; support any type of user devices and extend useful life of those devices by enabling access from any client platform.	Enables more flexible IT infrastructure while reducing IT costs.
Database independence	Support existing corporate computing standards for other data-center infrastructure components, such as Microsoft, IBM or Oracle.	Delivers a flexible IT infrastructure.
Directory service integration	Connect to and utilize existing corporate information and data using industry standards from Microsoft and Novell.	Improves IT productivity while leveraging industry standards.
SDK and API integration and expandability	Enable custom tailoring for third-party solutions and/or tools and utilities that are developed in-house.	Enables more flexible and tailored solutions.

SPEED APPLICATION DEPLOYMENT

FEATURE	DESCRIPTION	BENEFITS
NEW Application Isolation Environments <i>Enterprise Edition</i>	Provides a virtualization environment that does not allow direct access to files, the registry, or named objects.	Delivers broader application support. One key use is server consolidation. IT administrators do not have to run applications on server silos and can have all applications be co-hosted on all their servers. IT can now host applications on Citrix Presentation Server that are not multi-user friendly. IT can perform application compatibility testing easier and faster when upgrading applications. Since the applications are hosted in isolated environments, they can easily be upgraded without the need of any exhaustive compatibility testing.
NEW Virtual IP Address Support <i>Enterprise and Advanced Editions</i>	Creates a unique IP address for every session on a server.	Delivers broader application support by allowing applications that require a unique IP address per server.
NEW Web Interface Enhancements	Simplified Customization of the Web Interface	Increases IT productivity by more easily customizing the Web Interface appearance through the management console, eliminating the need for scripting, or custom coding.
NEW License Server Enhancements	The License Management Console can now be run with either Apache HTTP Server or Internet Information Services (IIS) as its Web server. Microsoft clustering is now supported as a high availability solution for the license server.	More flexible management as well as increased reliability for Presentation Server systems.
Application publishing	Simplify deployment of new applications, updates and patch deployment — regardless of the diversity of the access devices, software languages, computing architectures, and networks that are involved.	Reduces deployment time and effort thereby reducing cost.
Web Interface	Enables deployment of desktop and client/server applications over the Web.	Reduces application development costs by eliminating custom coding or the purchase of web applications while providing easy remote access via the web.
Portal integration	Add popular third-party Web portal products to existing corporate intranets, easily and without limitations.	Delivers a flexible access solution by delivering the power of Presentation Server through market leading portals.

INCREASE PRODUCTIVITY

FEATURE	DESCRIPTION	BENEFITS
<p>NEW Updated Universal Print Driver (UPD)</p>	<p>Universal Printer Driver 3 enables Presentation Server to use the Windows Enhanced Metafiles Format (EMF) for transferring print jobs from client to server.</p>	<p>Printing speed is up to 4 times faster, increasing user productivity. Improves user experience through access to advanced printer properties such as paper trays and finishing options, like stapling and sorting.</p>
<p>NEW Session Printer Policies</p>	<p>New printer policies in Presentation Server that allow definition of default printer, list of available printers, and print settings to be configured based on the connection policy filters.</p>	<p>Enables administrators to create customized printing workspaces based on any policy criteria, allowing for such functionality as automatic printing to the closest physical printer when roaming from device to device, all without the use of complex logon scripts. Improves user productivity.</p>
<p>NEW USB Synchronization for PDA Devices <i>Enterprise and Advanced Editions</i></p>	<p>Allows the synchronization of a client-connected USB Pocket PC device using ActiveSync software running on Citrix Presentation Server rather than on the client device.</p>	<p>Improves user productivity and experience. Perform Pocket PC synchronization without having to install any software on the client (only the ICA Client). Can use USB cradles instead of outdated serial cradles.</p>
<p>NEW Support for Image Scanning Peripherals <i>Enterprise and Advanced Editions</i></p>	<p>Redirect client-connected TWAIN imaging devices, notably document scanners, from the client to the server, regardless of connection type.</p>	<p>Provides flexible solution by allowing users to control client-attached imaging devices from applications that run on the server; the redirection is transparent.</p>
<p>NEW System performance gains</p>	<p>Processing performance has increased in two highly visible areas thereby reducing user wait times.</p>	<p>Improves user experience through faster Logon over a WAN and faster remote file access and directory browsing — especially for remote sessions where latency is significant.</p>
<p>NEW Multi-lingual User Interface Support for Web Interface</p>	<p>A single version of the Web Interface for all languages. Dynamically changes its localization depending on the user's or administrator's preferences.</p>	<p>Improves the user experience and increases IT productivity.</p>
<p>NEW Smart Card Roaming</p>	<p>PN Agent now enables users to use their smart cards to log on and off automatically as they roam from device to device.</p>	<p>Improves user productivity by allowing users to move from one device to another and have all their applications/workspace follow them as they logon and logoff to different devices using their smart cards.</p>
<p>NEW Conferencing Manager</p>	<p>Conferencing Manager as a product has been added to Presentation Server as a "feature" that provides published application sharing among individuals.</p>	<p>Improves user productivity with out of the box application conferencing for those organizations where IT constraints do not allow the use of Internet-based conferencing tools.</p>

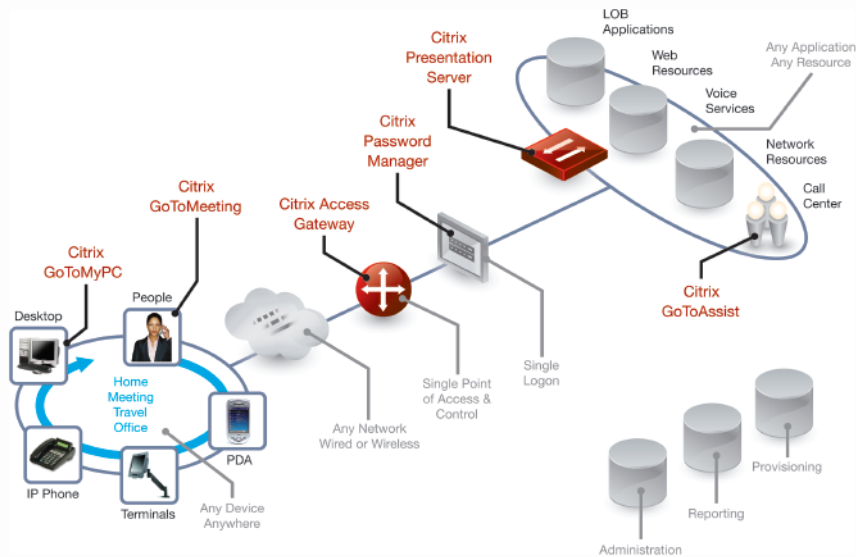
FEATURE	DESCRIPTION	BENEFITS
Workspace Control	Allows a user to roam between devices and networks while maintaining their access session	Improves user productivity and experience for roaming users like healthcare, manufacturing, police and fire, and any field position.
Session reliability	When network connectivity is lost, work items remain open, enabling users to resume working seamlessly.	Increases user productivity and experience when encountering “dead-zones” when using wireless networks and devices

INCREASE ACCESS SECURITY

FEATURE	DESCRIPTION	BENEFITS
NEW RSA SecurID and SafeWord on UNIX Web Interface	RSA SecurID and SafeWord authentication to the Web Interface is now available on UNIX platforms.	More flexible security options for UNIX environments.
Secure Gateway	Provides SSL/TLS encryption and multi-factor authentication to provide authorized access to appropriate users.	Ensures secure remote and mobile access over the Web.
Multi-factor Authentication	Supports most 2-factor authentication devices like tokens, smart cards and biometric devices.	Increases access security while providing flexible security options.

The Citrix Access Platform

Citrix products are designed to solve particular access challenges as standalone solutions. When multiple products are leveraged together, they lay the foundation of a secure, flexible, and extensible access platform.



Citrix Presentation Server™ is the market leader for centralizing deployment and management of enterprise applications, and provides secure, on-demand access to users anywhere, on any device and any connection.

Citrix Access Gateway™ is an advanced, easy to use, and cost effective SSL VPN with advanced access control that manages who accesses company information and what they can do with it.

Citrix Password Manager™ is the most secure, efficient and easiest-to-deploy enterprise single sign-on solution for easy access to all applications with a single logon.

Citrix GoToMeeting™ is a Web-based managed service that makes it easy for anyone to access real-time collaboration tools and online meetings — instantly, securely and cost-effectively.

Citrix GoToAssist™ is an industry-leading remote-support solution that enables organizations to provide access to world-class support over the Internet for customers and end users in a highly available and secure environment.

Citrix GoToMyPC™ is a managed service that provides secure, encrypted remote access to Windows PC desktops from any Internet-connected computer.



About Citrix: Citrix Systems, Inc. (Nasdaq:CTXS) is the global leader in access infrastructure solutions and the most trusted name in secure access for enterprises and individuals. More than 160,000 organizations around the world use Citrix every day. Our access software, services and appliances give people secure and well-managed access to business information wherever it lives—on demand. Citrix customers include 100% of the *Fortune* 100 companies, 99% of the *Fortune* 500, and 97% of the *Fortune* Global 500. Based in Fort Lauderdale, Florida, Citrix has offices in 22 countries, and approximately 6,200 channel and alliance partners in more than 100 countries.

©2005 Citrix Systems, Inc. All rights reserved. Citrix®, Citrix Access Suite™, Citrix Presentation Server™, Citrix Access Gateway™, Citrix Password Manager™, Citrix GoToMeeting™, Citrix GoToAssist™, and Citrix GoToMyPC™ are trademarks or registered trademarks of Citrix Systems, Inc. in the United States and other countries. UNIX® is a registered trademark of The Open Group in the United States and other countries. AIX® is a registered trademark of International Business Machines Corporation. HP-UX® is a registered trademark of Hewlett-Packard Company. Sun™, Java™ and Solaris™ are trademarks or registered trademarks of Sun Microsystems, Inc. Macintosh® is a registered trademark of Apple Computer, Inc. Microsoft® and Windows® are registered trademarks or trademarks of Microsoft Corporation. Linux® is a registered trademark of Linus Torvalds. All other trademarks and registered trademarks are the property of their respective owners.

0405/PDF

Learn How Presentation Server Can Help

Why not make the move to Citrix? Help your department, your users and your organization with Citrix Presentation Server. It's the easiest way to centrally manage applications and provide secure, on-demand access. From the most trusted name in access infrastructure solutions.

Visit us at www.citrix.com/presentationserver and find out more.

Citrix Worldwide

WORLDWIDE HEADQUARTERS

Citrix Systems, Inc.

851 West Cypress Creek Road
Fort Lauderdale, FL 33309 USA
Tel: +1 (800) 393 1888
Tel: +1 (954) 267 3000

EUROPEAN HEADQUARTERS

Citrix Systems International GmbH

Rheinweg 9
8200 Schaffhausen
Switzerland
Tel: +41 (52) 635 7700

ASIA PACIFIC HEADQUARTERS

Citrix Systems Hong Kong Ltd.

Suite 3201, 32nd Floor
One International Finance Centre
1 Harbour View Street
Central
Hong Kong
Tel: +852 2100 5000

CITRIX ONLINE DIVISION

5385 Hollister Avenue
Santa Barbara, CA 93111
Tel: +1 (805) 690 6400

www.citrix.com